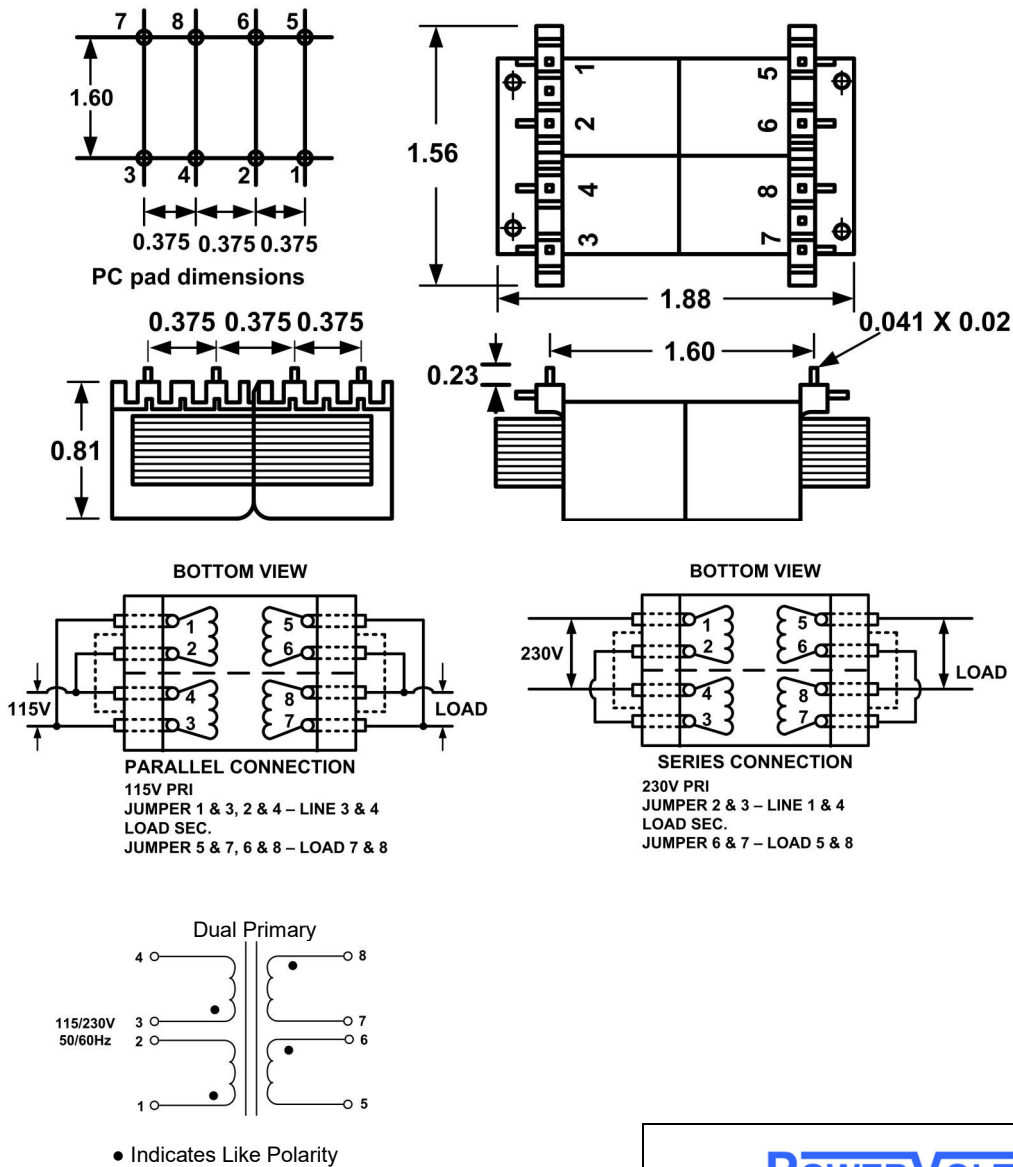


FZ - PRINTED CIRCUIT MOUNT, LOW PROFILE POWER TRANSFORMER



1. Electrical Specifications

- A. Maximum Power: 6VA
- B. Input Voltage and Frequency: 115/230V @ 50/60Hz
- C. Voltage Regulation: 21% TYP, Full Load to No Load
- D. Temperature Rise: 30°C TYP
- E. Insulation Resistance: < 1 MEG ohm
- F. Hi-Pot: 1500 Vrms 1 minute

2. Agency Approval:

UL/cUL 5085-2 Recognized (File E47299)
 Insulation File No. E95662



Part No.	Series Connection	Parallel Connection
FZ 10-600	10VCT @ 0.600A	5V @ 1.20A
FZ 12-450	12.6VCT @ 0.450A	6.3V @ 0.900A
FZ 16-350	16VCT @ 0.350A	8V @ 0.700A
FZ 20-300	20VCT @ 0.300A	10V @ 0.600A
FZ 24-250	24VCT @ 0.250A	12V @ 0.500A
FZ 30-200	30VCT @ 0.200A	15V @ 0.400A
FZ 34-170	34VCT @ 0.170A	17V @ 0.340A
FZ 40-150	40VCT @ 0.150A	20V @ 0.300A
FZ 56-100	56VCT @ 0.100A	28V @ 0.200A
FZ 88-130	88VCT @ 130MA	44V @ 260MA
FZ 120-100	120VCT @ 100MA	60V @ 200MA
FZ 230-50	230VCT @ 50MA	115V @ 100MA
WEIGHT : 7 Oz.		

 The Power for your System	POWER TRANSFORMER		FZ 10-XXX	
	CONTENTS OF THIS DRAWING ARE SUBJECT TO CHANGE WITHOUT PRIOR NOTICE		Powervolt, Inc. 300 W Factory Road, Addison, IL -60101	Dim: Inches Sheet 1 of 1
PROPRIETARY NOTICE: THIS DRAWING PRINT OR DOCUMENT AND SUBJECT MATTER DISCLOSED HEREIN ARE PROPRIETARY ITEMS TO WHICH POWERSVOLT RETAINS THE EXCLUSIVE RIGHT OF DISSEMINATION, MANUFACTURE AND SALE. THIS DRAWING, PRINT OR DOCUMENT IS SUBMITTED IN CONFIDENCE FOR CONSIDERATION BY THE RECIPIENT ALONE UNLESS PERMISSION FOR FURTHER DISCLOSURE IS EXPRESSLY GRANTED IN WRITING				